

Assembly Instructions

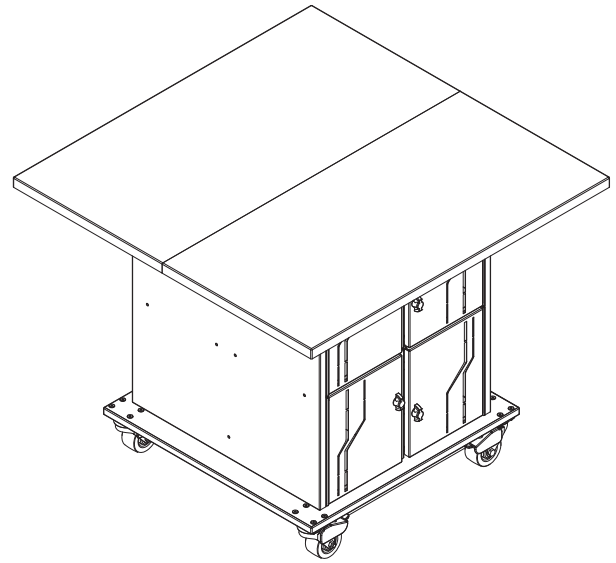
⚠ Important ⚠

Before you begin, read and comply with all safety and operating instructions, and ensure all parts and correct quantities are included.

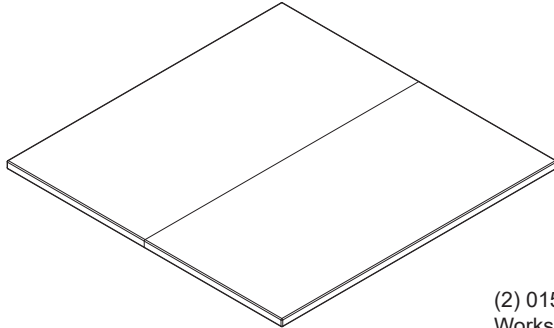
Any parts damaged during shipment must be reported within 5 days of receipt. To report information regarding missing parts or damage, to purchase parts or accessories, or if you have any questions, please contact us.

www.spectrumfurniture.com
800-235-1262, 715-723-6750

Thank you for purchasing Spectrum products!



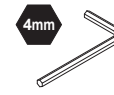
LT48 Fab Lab Table 24019, 24020



(2) 0152866
Worksurface half



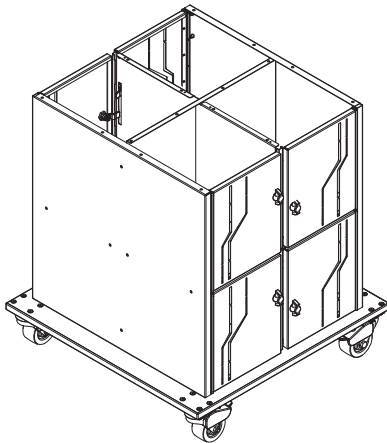
45
min



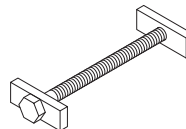
X4



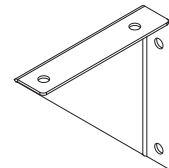
Assembly tip: Do not tighten component fasteners completely until all have been installed. Keeping them loose will help with alignment between parts during assembly.



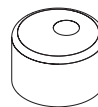
(1) Base Assembly



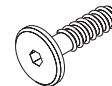
(3) 0112582
1/4-20 x 3.5"
Draw bolt



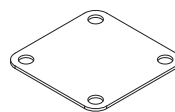
(4) 0153467
Support bracket



(4) 0107139
Bumper stop
door cam



(4) 0102297
7mm x 30mm
JCWS



(2) 0142004
Unit-to-unit
bracket



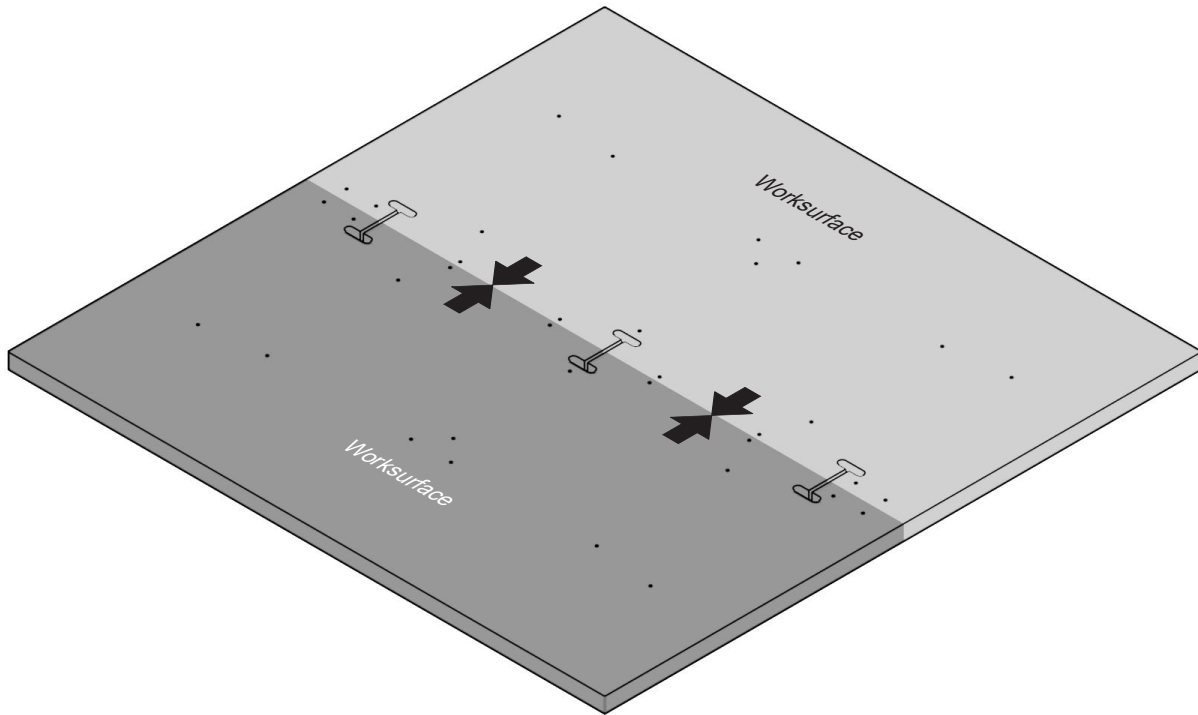
(8) 026064
1/4-20 x 5/8"
PHMS



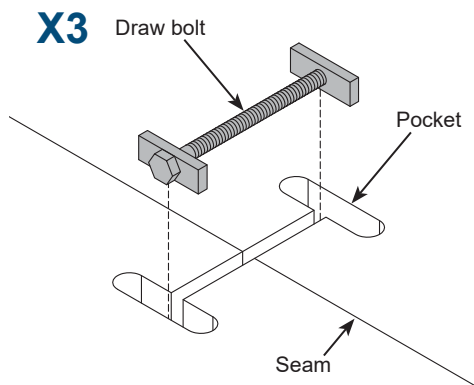
(28) 0101382
#14 x 7/8" PHSM

1 Assemble worksurfaces

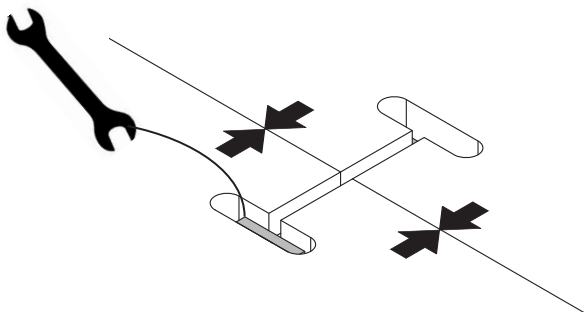
1. Place the worksurfaces laminate-side down onto a flat non-abrasive surface and bring the two worksurfaces together.



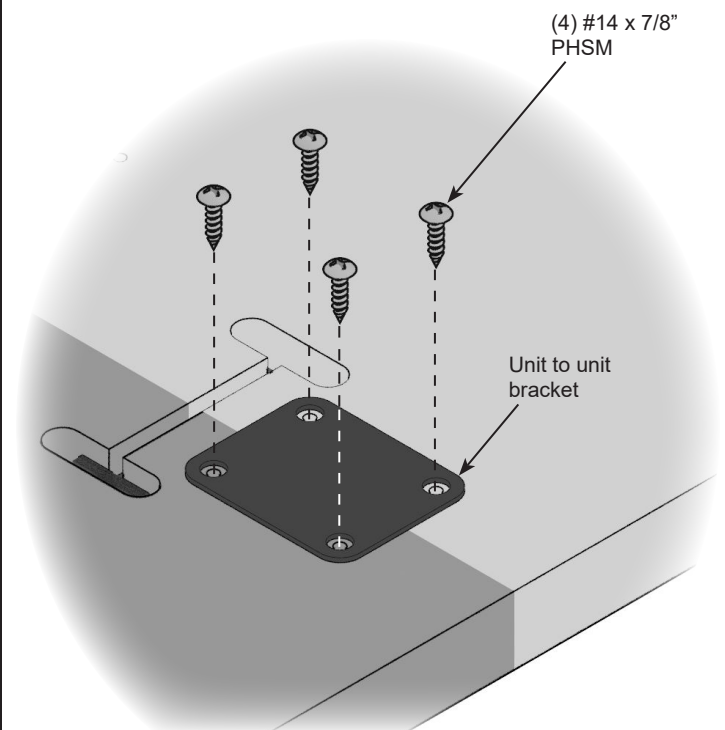
2. When the two worksurfaces are completely together (tight seam), set a draw bolt into each pocket.



3. Tighten all (3) draw bolts evenly with a 7/16" open end wrench while making sure the laminate side of the 2 worksurfaces is perfectly aligned. Each bolt should be tightened equally until the assembly is snug. Do not overtighten bolts.

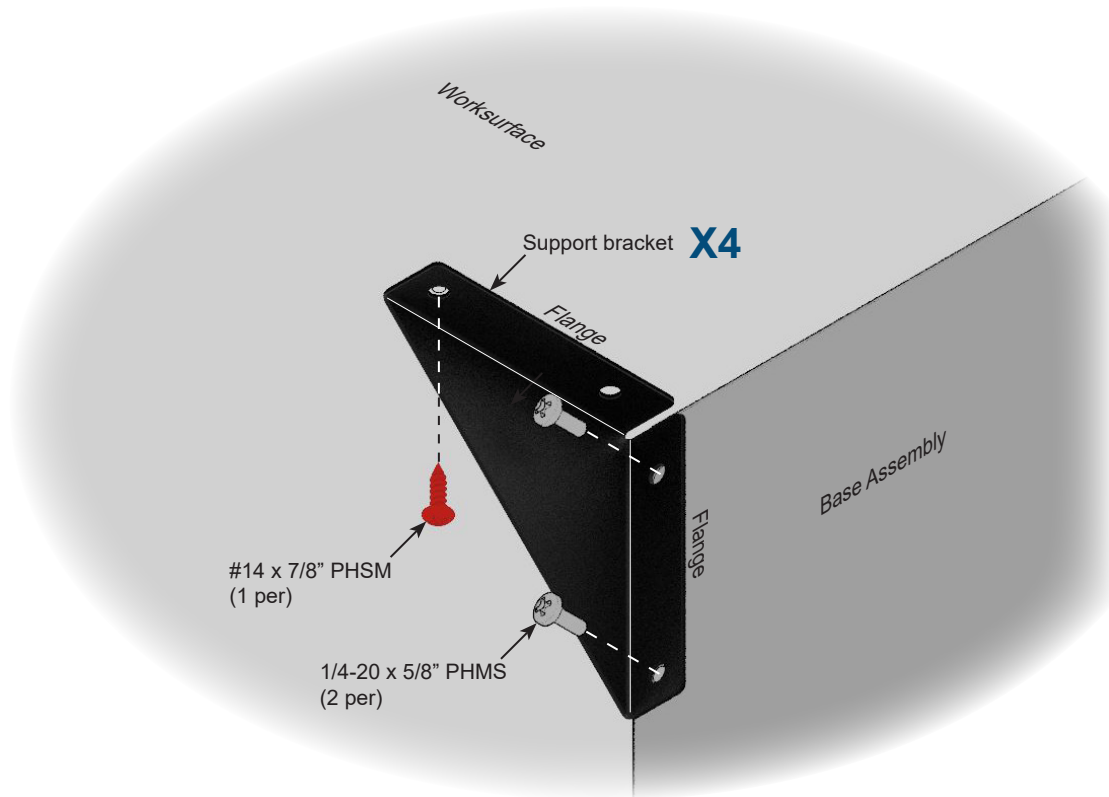


4. Using the pre-drilled pilot holes and (4) #14 x 7/8" PHSM screws, install the (2) unit-to-unit brackets across the seam as shown (one on each end).
5. Tighten screws securely.



2 Attach support brackets

1. Align and attach the (4) support brackets to the base assembly (one on each corner) with (2) 1/4-20 x 5/8" PHM screws. The flanges will face inward.
2. Install (1) #14 x 7/8" PHSM screw into the worksurface pilot hole hole shown.



3 Attach worksurface

1. While fully supporting the seam and all edges, carefully flip over the worksurface assembly and set onto the base. The seam will align with the continuous center panel dividing the 8 cabinets.
2. Open the top doors and align the worksurface with the mounting holes.
3. Install the #14 x 7/8" PHSM screws as shown from the inside.
4. Attach the (4) bumper stops as shown with 7mm x 30mm JCW screws.
5. The bumper should make contact with the door just as it's closed. Rotate to adjust the bumper stops as needed, then tighten screw.

