

NEW

## Freedom One eLift Lectern™



The perfect height  
for any person,  
any environment

Electronically adjusts from  
28.5"-42" in seconds\*

30% more rack  
capacity  
20% more cable  
management  
capacity  
than our  
competitors

• Ergonomic  
• Adaptable  
• Whisper Quiet

NEW  
JULY  
2015!

NOW AVAILABLE WITH NEW LAMINATE COLOR CHOICES!



ERGONOMIC  
WHISPER-QUIET  
LIFT SYSTEM



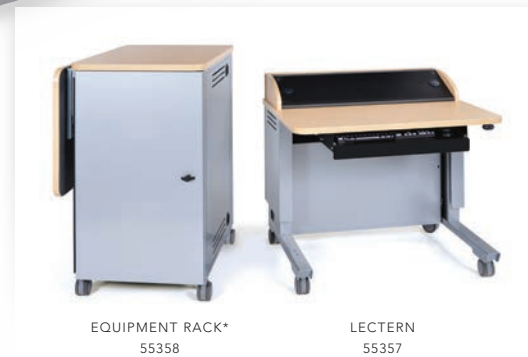
EQUIPMENT RACK  
MOUNTS LEFT  
OR RIGHT



REMOVABLE PANEL ON  
OVERBRIDGE FOR EASY  
AV INTEGRATION



REMOVABLE BACK PANEL  
FOR 100% ACCESS



## Freedom One eLift Lectern™

### PRODUCT DIMENSIONS

WORKSTATION	36"W x 30"D x 28.5" to 42" H (with casters)
EQUIPMENT RACK	22.19"W x 30"D x 39.11"H (with casters)
RACK UNITS	18 rack units front, 18 rack units back

The Equipment Rack can be shipped to a separate location to make AV integration quick and easy. Work with your sales representative today!



(pending)

### OPTIONS (WHEN ORDERING SEPARATELY)

55357	LECTERN
55358	EQUIPMENT RACK
55359	UNIT-TO-UNIT CONNECTOR
55378	FLIP-UP SHELF ONLY
55379	KEYBOARD TRAY ONLY
55380	LOGO PANEL ONLY

### WARRANTY

10-year lectern  
2-year electrical

\* Equipment Rack must be connected to Lectern to use Flip-Up Shelf. Shelf should not be installed on free-standing Equipment Rack.

#### Flexible Integration

- Massive, 18-rack unit lockable storage system
- Overbridge Control Console™ with removable panel for easy AV technology integration
- Equipment rack accessible from both sides
- Generous cable management channel in lectern

#### Smart Design

- Ergonomic and ADA-compliant workstations
- Easy connecting system
- Removable kick panel limits access and protects wires
- Modular equipment rack mounts right or left
- Full modesty panel for a finished look

#### Accommodates Your Needs

- Improve ergonomics and functionality with a wide range of accessories
- Flexible tray for keyboard or extra storage (optional)
- Customizable front logo panel (optional)
- Flip-up shelf for equipment rack (optional)

#### Engineered and Built for Performance

- Lectern has lift capacity of more than 500 pounds
- Whisper-quiet, durable lift system raises and lowers in seconds
- Superior chimney-effect ventilation in equipment rack

\* with casters



# Build Your Perfect Lectern

Questions?  
Please contact Spectrum customer service today!  
800-235-1262



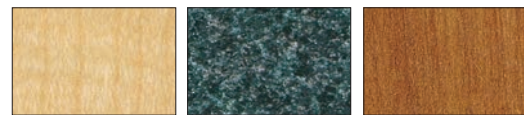
Simply follow each step below to generate your Freedom One eLift Lectern Product Order Number.  
Record the letter or number code from each step in the corresponding boxes in this order generating chart.

FREEDOM ONE E-LIFT	1 LAMINATE	EDGE COLOR	2 METAL FINISH	3 LECTERN	4 BASE	5 RACK	6 DOOR	7 SHELF	8 KEYBOARD	9 LOGO
55357										

## 1 Choose Your Laminate and Edge Band Color

### STANDARD LAMINATE EXPRESSIONS

14-DAY QUICK-SHIP



Fusion Maple with matching Edge Band | Indigo Organix with Black Edge Band | Wild Cherry with matching Edge Band

ORDER CODE **FM FM** | ORDER CODE **IO BK** | ORDER CODE **CH CH**

### ADDITIONAL DESIGNER LAMINATE EXPRESSIONS

28-DAY SHIPPING



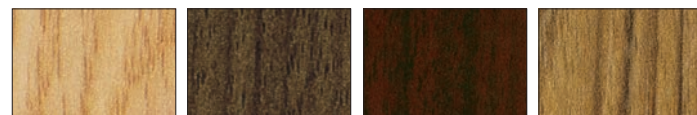
Black with matching Edge Band | Bronze Legacy with matching Edge Band | Desert Zephyr with matching Edge Band | Morro Zephyr with matching Edge Band | Natural Tigris with matching Edge Band

ORDER CODE **BK BK** | ORDER CODE **BL BL** | ORDER CODE **DZ DZ** | ORDER CODE **MO MO** | ORDER CODE **NT NT**



Misted Zephyr with Silver North Sea Edge Band | Pewter Mesh with matching Edge Band | Steel Mesh with matching Edge Band | Twilight Zephyr with matching Edge Band | White Fiesta with Black Edge Band

ORDER CODE **MZ SN** | ORDER CODE **PM PM** | ORDER CODE **SM SM** | ORDER CODE **TZ TZ** | ORDER CODE **WF BK**



Castle Oak with matching Edge Band | Colombian Walnut with matching Edge Band | Empire Mahogany with matching Edge Band | Nepal Teak with matching Edge Band

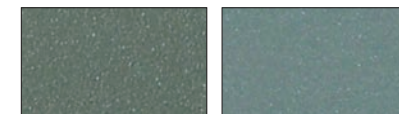
ORDER CODE **CK CK** | ORDER CODE **CW CW** | ORDER CODE **EM EM** | ORDER CODE **NP NP**

## 2 Choose Your Metal Finish Color

### STANDARD METAL COLOR EXPRESSIONS



ORDER CODE **B** Black | ORDER CODE **CM** Champagne Metallic



ORDER CODE **D** Dark Gray | ORDER CODE **S** Silver Sparkle

## 3 Choose Your Lectern Style



ORDER CODE **S1** Surround (as shown)  
ORDER CODE **S2** Surround with Custom Cutouts (will increase lead time and additional charges will apply)



ORDER CODE **B1** Overbridge (as shown)  
ORDER CODE **B2** Overbridge with Custom Cutouts (will increase lead time and additional charges will apply)

## 4 Choose Your Base



ORDER CODE **01** Twin-Wheel Casters



ORDER CODE **02** Glides

## 5 Choose Your Equipment Rack



ORDER CODE **1** Equipment Rack with Standard Worksurface (No Cutouts)

ORDER CODE **2** Equipment Rack with Cutouts (will increase lead time)

ORDER CODE **0** No Equipment Rack (Skip steps 6 and 7)

## 6 Choose Your Equipment Rack Door



ORDER CODE **0** No Door

ORDER CODE **1** Solid Door

ORDER CODE **2** Acrylic Door

## 7 Flip-Up Shelf for Equipment Rack



ORDER CODE **0** No Flip-Up Shelf

ORDER CODE **1** Flip-Up Shelf

(Do not use the Flip-Up Shelf with Equipment Rack alone. It must be attached to the Lectern with connector kit.)

## 8 Keyboard Tray for Lectern



ORDER CODE **0** No Keyboard Tray

ORDER CODE **1** Keyboard Tray

## 9 Factory Installed Logo Panel



ORDER CODE **0** No Logo Panel

ORDER CODE **1** Factory-Installed Custom Logo Panel (will increase lead time and additional charges will apply)

### To Order Equipment Rack Separately

<b>1 LAMINATE COLOR</b> Choose Laminate from choices at left
<b>EDGE BAND COLOR</b> Write Edge Band color associated with your Laminate color
<b>2 METAL FINISH COLOR</b> Choose Metal Finish color from choices at left
<b>4 BASE</b> Choose Base from choices at left
<b>5 EQUIPMENT RACK</b> Choose Equipment Rack option from choices at left
<b>6 DOOR FOR EQUIPMENT RACK</b> Choose Door option from choices at left

For your Equipment Rack Product Order Number, enter the codes selected:

FREEDOM ONE E-LIFT	1 LAMINATE	EDGE COLOR	2 METAL	4 BASE	5 RACK	6 DOOR
55358						

Note: Color samples are approximate. All edge band will match your chosen laminate or as shown, unless you specify differently. Not all metal finishes are available for quick ship laminates. For more details about the laminates and edge bands available and to request samples, visit [spectrumfurniture.com/expressions](http://spectrumfurniture.com/expressions).